

El Moro/Trinidad I-25 - MM 17.72
Elevation \approx 6100'

CDOT Region #2



Good access to I-25

Summary Observations

An on-site ADA survey was conducted October 5, 2016, by Patrick Going, ADA Consultant. All observations are based on the *2010 ADA Standards for Accessible Design*. These Standards may be found at www.access-board.gov.

This is a modern rest area with easy access from I-25 - just north of Trinidad. It is supervised and maintained seven days a week. This rest area is very accessible for people with disabilities. No deficiencies of any significance were observed.

Parking

There are 40 automobile parking spaces with four (4) designated accessible parking spaces - two of which are marked 'van.'

There is a separate paved parking area with 14 large parking spaces for RV's and trucks. Good access route to the building and amenities.

Path-of-Travel

The route from the accessible car parking spaces to the building is acceptable.

Rest Rooms

The men's and women's rest rooms are acceptable with full-size accessible toilet stalls. The sink pipes aren't wrapped but one sink in each area is turned and recessed..

Vending Machines and Visitor Information

There is ample circulation space to reach the vending machines and visitor information.

Dog Relief Areas - There is ample 'dog relief' areas. They are accessible for people with disabilities who use assistive mobility devices.



ADA Graded Summary*

*Based on 2010 ADA Standards for Accessible Design







Excellent



Moderate

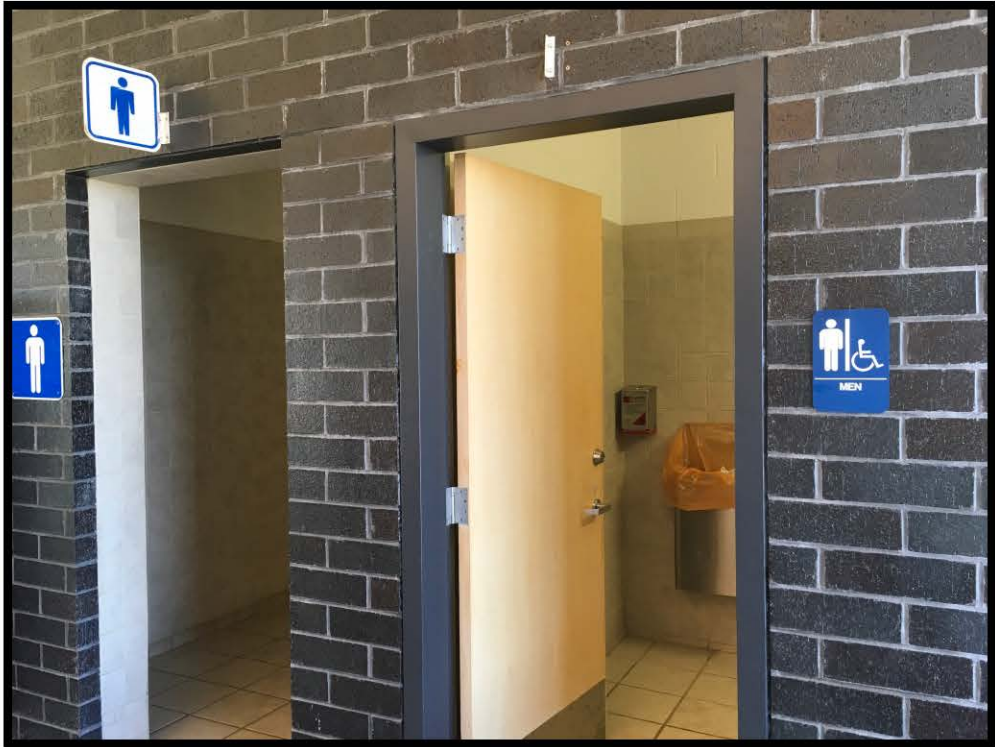


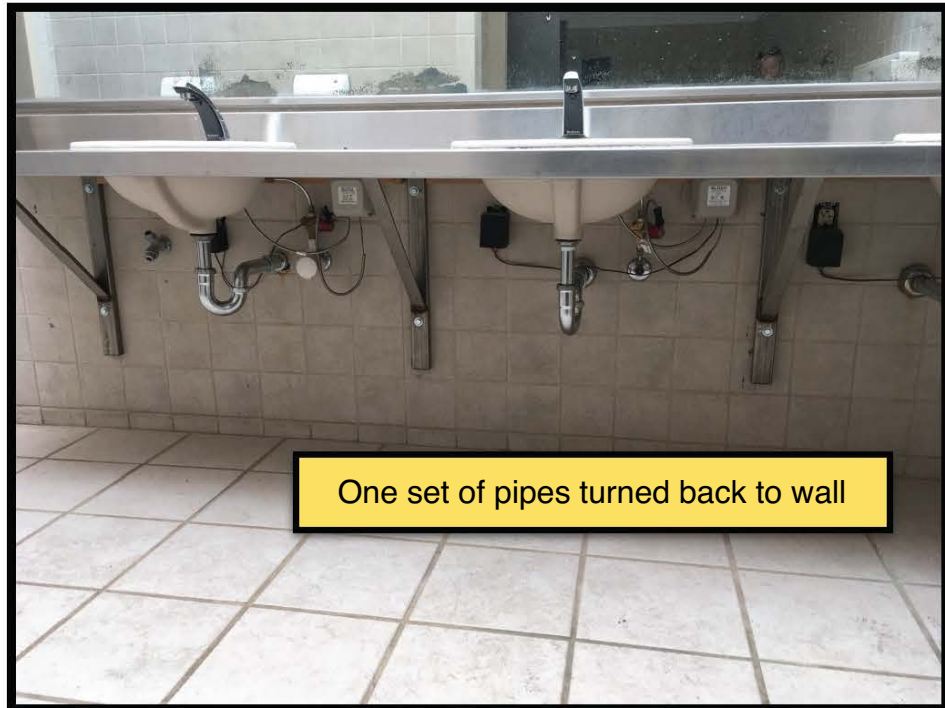
Poor

Parking 	Path-of-Travel to Building/Services 	Restrooms 	Vending/Picnic Tables 
40 spaces/4 accessible. Two have 'van' sign.	Paved surface, curb cuts, OK slope	Women's, Men's , Family - ADA compliant	Vending - OK Picnic tables - OK Pet area - OK

Recommendations	
Description	Priority
No remedial recommendations	N/A







One set of pipes turned back to wall

